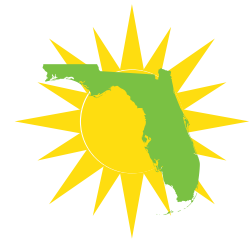


# Fast Facts about Employment for People with Disabilities in Florida

Data source: *National Core Indicators Project*



Employment First FLORIDA

## How many Floridians with disabilities are working?

There are many different ways to answer this question. Data from the **National Core Indicators (NCI) Project** can help us understand what percentage of people are working and what percentage of people want to work.

## What are the National Core Indicators?

NCI is a tool to collect data. Many state developmental disabilities agencies use this tool, including the Agency for Persons with Disabilities (APD) here in Florida.

NCI helps states pay attention to how well they are supporting people with developmental disabilities over time. For more information, you can go to this website: [www.nationalcoreindicators.org/about/](http://www.nationalcoreindicators.org/about/)

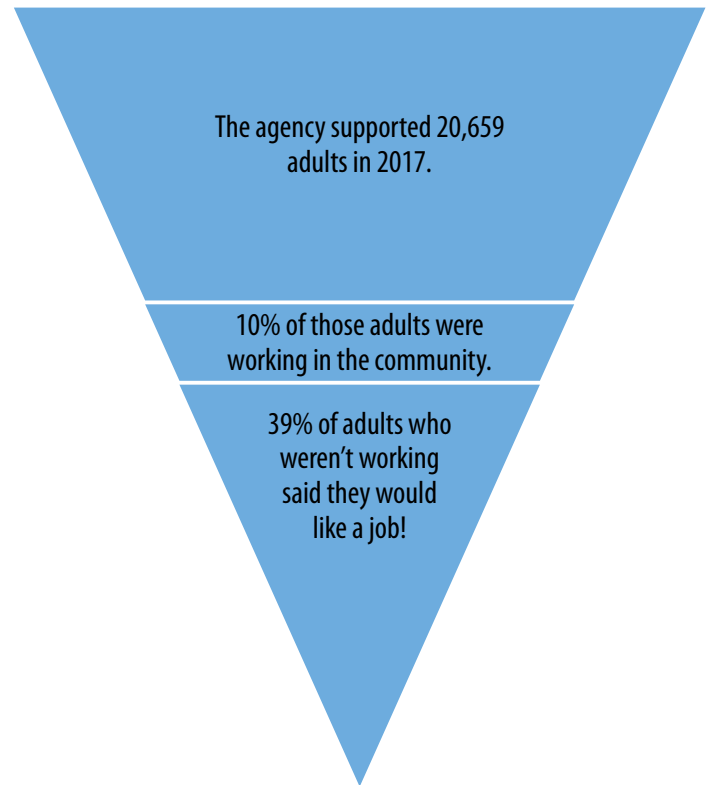
The triangle on the right shows how Florida is doing in helping people with developmental disabilities find jobs.

First, look at the bottom of the triangle. It shows us that 39% of people with developmental disabilities who do not work in the community would like to.

Now look at the middle of the triangle. It shows us that only 10% of people who get help from APD are working in the community.

Florida is an Employment First State. This means the state has a policy that employment should be the first option considered for adults with disabilities. Many groups are working together to help more people in Florida get jobs.

You can learn more about Employment First Florida here: [www.employmentfirstfl.org/](http://www.employmentfirstfl.org/)



**“Employment First” means that working in the community should be a choice for everyone, with or without a disability.**

**The Institute for Community Inclusion at the University of Massachusetts Boston is working with the Florida Developmental Disabilities Council and other state agencies to make “Employment First” happen in Florida.**



Florida  
Developmental  
Disabilities  
Council, Inc.

For more information about Employment First Florida, please visit the website [www.EmploymentFirstFL.org/](http://www.EmploymentFirstFL.org/)

For more information about this data, please email:  
[ashley.wolfe@umb.edu](mailto:ashley.wolfe@umb.edu)  
[allison.hall@umb.edu](mailto:allison.hall@umb.edu)